

## Flexible Video Management Platform



Welcome to the revolution  
IN DIGITAL MEDIA



### Key Features

- 3 hardware variants offer range of price performance options.
- avediaServer Lite offers complete range of modules pre-configured for smaller installations.
- avediaServer and avediaServer Max allow users to choose the functionality and performance they require.
- Dynamic Video on Demand module give users the choice of what to view and when with 200Mbps or 500Mbps options.
- EPG module allows ease of use viewing and recording selections.
- Scheduled Play module allows broadcast of up to 10 channels simultaneously.
- Portal module allows control of content individual users can view.

### Product Overview

Introducing the next generation of IPTV, the Exterity avediaServer. The complete package providing state of the art features for today's IPTV demands.

The avediaServer is a complete solution for your IPTV requirements and the functionality includes; video on demand (VOD) capabilities, the capacity to manage a wide range of broadcast services, the ability to record broadcast media, and store it for future viewing, and a built in electronic program guide (EPG) service to allow fast and efficient navigation of your IPTV provision.

The Exterity avediaServer is also equipped with a built-in property management system (PMS). This function is ideal for hotels where personalised guest welcome messages can be displayed in individual rooms and hotel information, such as restaurant menus and facilities opening times, can be displayed in a professional and up to date manner.

### Applications

- **Corporate** information can be recorded onto the avediaServer for network streaming at a later date. Broadcasts can be scheduled for specific times or regular intervals.
- **Education** can benefit from VOD direct to teaching facilities at the time that suits not the time the DVB stream is broadcast.
- **Hospitality** users will benefit from the built-in Property Management System (PMS), giving your guests a world class experience and professional service.
- **Public Information** can be displayed to provide entertainment, advertising and information in public areas such as airports, exhibition halls and building reception areas.

### Benefits

- **Simplifies** delivery of digital TV, radio and video across buildings or campus networks.
- **Complete** IPTV server package delivered in one package.
- **Integrates** seamlessly with all other Exterity products.
- **Rack Mountable** to fit into your existing server platforms.

# avediaServer

Platform Overview



## Common Attributes

### Overview

- Resilient scalable server platform
- Linux Server
- Large range of storage options

### Processor

- 1 or 2 x 1.864GHz Quad-Core Intel® Xeon® Processor 5300 sequence

### Memory

- Up to 4GB DDR2 SDRAM

### Drives

- Up to 8 x 320 GB SATA hard drives in RAID5 set
- Slim 8 x DVD, 24 x CD DVD-ROM Drive

### Ports

- 2 x USB Ports + DB9 COM Port

### Chassis

- 2U Rackmount

### Dimensions

- Height 3.5" (89mm)
- Width 16.8" (426mm)
- Depth 25.5" (648mm)
- Gross Weight 55 lbs (24.9kg)
- Colour Black

## avediaServer Variations

### avediaServer Lite

- Supermicro 2U UIO Superserver Dual Processor Bensley platform, dual LAN onboard, raid 5 on board VGA on board
- Intel Xeon Processor 1.86GHz
- 1Gb ATP Approved Memory 667MHz
- 320 Gb Seagate Enterprise Drive
- Build and test service
- RAID 0 configuration

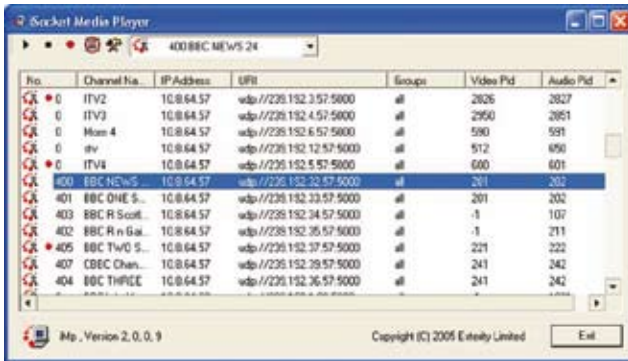
### avediaServer

- Supermicro 2U UIO Superserver Dual Processor Bensley platform, dual LAN onboard, raid 5 on board VGA on board
- Clovertown 1.86GHz Quad core processor
- 2Gb ATP approved memory 667 MHz
- 2 x 320GB Seagate Enterprise class drives
- Build and test service
- RAID 0 configuration

### avediaServer Max

- Supermicro 2U UIO Superserver Dual Processor Bensley platform, dual LAN onboard, raid 5 on board VGA on board
- 2 x Clovertown 1.86GHz Quad core processor
- 4Gb ATP approved memory 667 MHz
- 8 x 320GB Seagate Enterprise class drives
- Build and test service
- RAID 5 configuration

## VOD Modules



## Access Control VOD GUI

- Web Content Management Systems
- Automatic positioning of content on upload of asset and meta data
- Configurable index and search structure

## Management

- Web management of content
- Add/Delete content
- Define schedule
- Configuration and auto content upload

## Common features

### OnDemand Content Access

- RTSP stream control

### Fixed and scheduled streaming

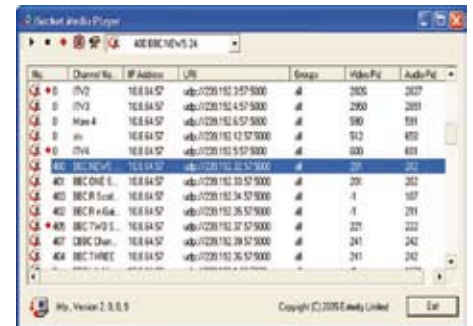
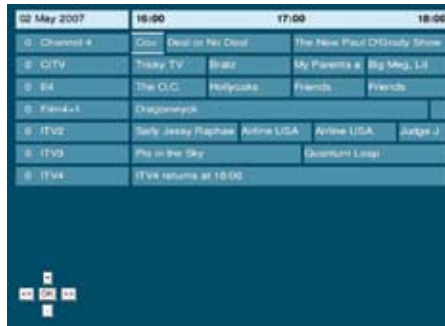
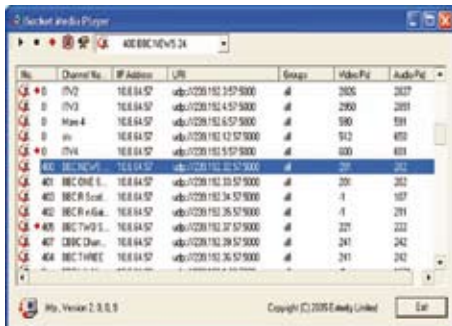
- Fixed: Stream defined content in a loop
- Scheduled: Stream content to schedule

## VOD 200

- Up to 200 Mbps total streaming capacity

## VOD 500

- Up to 500 Mbps total streaming capacity



## Scheduled Play Module

### Fixed and Scheduled Streaming

- Fixed: Stream defined content in a loop
- Scheduled: Stream content to schedule

### Channel Capacity

- 10 simultaneous channels

### Management

- Web management of content and schedule
  - Define schedule and playlist
  - Add/Delete content
- Configuration and auto-content upload

## EPG Server Module

### Central organisation wide EPG server

- Customizable EPG for channels available on the network

### EPG information sources

- DVB Stream
- Scheduled channel play out server
- Manual definition for encoded video sources

### Flexible browser view

- From PC or Exterity IPTV receiver

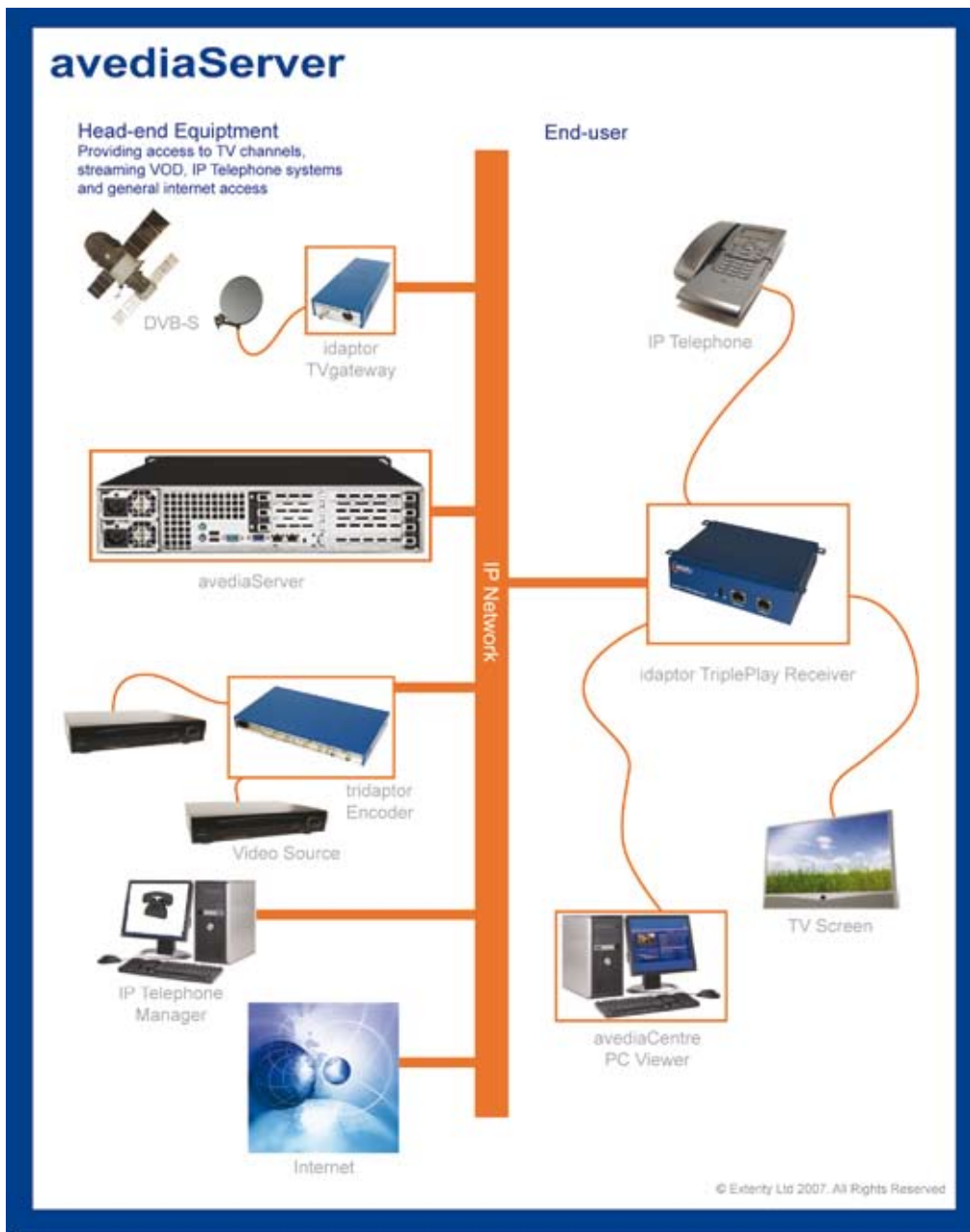
### Active Interface

- Schedule program recording
- Schedule program viewing

## Portal Module

### Basic Features

- Control user access to content
- Control user contribution of content
- Track content use and contribution
- Proxy to organisational ICT security systems such as LDAP or Active Directory
- Present user-specific video services portal



## Applications:

### Corporate

- Deliver relevant corporate and knowledge content over corporate networks direct to employees desks, meeting rooms and public areas.
- Used to provide staff with business critical information, e.g. news channels to trading floors in the City, training and education, and general news and information, e.g. TV in canteens and public areas and general company communications.

### Hospitality

- Deliver TV, radio and video around hospitality venues such as stadiums and hotels; includes delivery to patient bedsides in hospitals.
- Provide digital signage solutions that combine advertising and hotel service information with live TV or video on demand.

### Education

- Deliver educational TV and video content to classrooms or to student PCs. Both live and recorded content and foreign language TV from satellite sources.
- Providing news, information and entertainment TV and video to common and public areas on campus.
- Providing TV services to students in on-campus accommodation. This is of particular relevance with many new student accommodation blocks being wired to provide internet access, but not being wired with satellite or aerial feeds to rooms.

### Head Office

Ridge Way  
Hillend Industrial Estate  
Dalgety Bay  
Dunfermline  
UK  
KY11 9JD

### Sales Office

200 Brook Drive  
Green Park  
Reading  
UK  
RG2 6UB

t: +44(0) 1383 828 250

f: +44(0) 1383 824 905

w: [www.exterity.co.uk](http://www.exterity.co.uk)

e: [info@exterity.co.uk](mailto:info@exterity.co.uk)